



# TECHNICAL INFO

1. . . . . TRANSPORT - GUESTS RECEPTION
2. . . . . TECHNICAL INFO - SOUND
3. . . . . SOUND PATCH
4. . . . . TECHNICAL INFO - LIGHT
5. . . . . STAGE LIGHTS PLAN
6. . . . . STAGE PLOT

**Compagnie HILARETTO**  
87, rue Napoléon Demarquette  
FR-62110 HENIN-BEAUMONT  
[administration@hilaretto.com](mailto:administration@hilaretto.com)  
tél: +33 (0) 3 21 28 09 96  
+33 (0) 6 38 37 70 28

**TECHNICAL Manager**  
**Sound & Light**  
Antoine LARGOUNEZ  
[largounez.a@gmail.com](mailto:largounez.a@gmail.com)  
tél: +33 (0) 6 66 58 13 47



## TECHNICAL INFO - SOUND

For this show a GRAND PIANO (6' to 6'10 Ft / LA-442hz) is necessary  
**IT MUST BE FINANCIALLY SUPPORTED BY ORGANIZERS**  
In the case of the stage is less than 6 meters wide,  
it is recommended to use a Medium Grand Piano (5'4 to 5'8 Ft).

*Before rent any equipment, please sending a mail to the Cie. technical manager for verifications.*

### F . O . H .

- Adapted and calibrated stereo sound system
- 31 channels stereo equalizer
- Digital mixing console with minimum 16 CH, 2 AUX & 4 FX processors
- USB player (wav ou mp3) with auto-pause function

### STAGE EQUIPMENT

- 1 Grand Piano (6' to 6'10 Ft / LA 442Hz)
- 1 Wedge 12' (AUX-1)
- 1 Side 15' (AUX-2)
- 3 UHF wireless connections + pockets
- 2 Head-mic DPA 4088 cardioide + UHF pocket plug (connectics)
- 1 Avalon VT-737-SP or DBX-676 or similar
- 1 Avalon AD-2022 or similar
- 2 Piano-mic DPA 4099-P or KM184
- 1 Inst-mic SM94, SM137 or AT4041
- 1 Vocal mic-stand
- 1 Baby mic-stand K&M 25950-300-55
- 2 Guitar-stands with neck mounting
- 12 Batteries AA-LR6
- 1 Bass Drum (16" or 18") with pedal

### OTHER NEEDED

- 1 towel (100x50cm env.)
- 4 paper cups (expresso type)
- 1 packet of coffee + paper filters
- 1 packet of sandwich/sliced bread



## SOUND PATCH

1	Micro PIANO (L)	
2	Micro PIANO (R)	
3	UHF VIOLIN + Avalon VT737SP	Supplied by the Cie.
4	UHF VOICE 1 + Avalon AD-2022 (DPA 4088+Pocket)	
5	UHF VOICE 2 + Avalon AD-2022 (DPA 4088+Pocket)	
6	UHF GUITAR	Supplied by the Cie.
7	Shure SM94 / SM137 / AT4041	
8	UHF SPARE	
9	CD / USB (L)	
10	CD / USB (R)	
11	Talkback	
Aux 1	Retour	
Fx1	Rev Plate	
Fx2	Rev Med Hall	
Fx3	Room	
Fx4	TAP-Delay	



# TECHNICAL INFO - LIGHTS

## NEEDED EQUIPMENT

DMX lighting desk /w timmed sequences  
(MA Lightcommander II)

Main room lights control

Total darkness

Discreet lighting in each wing & behind the curtain

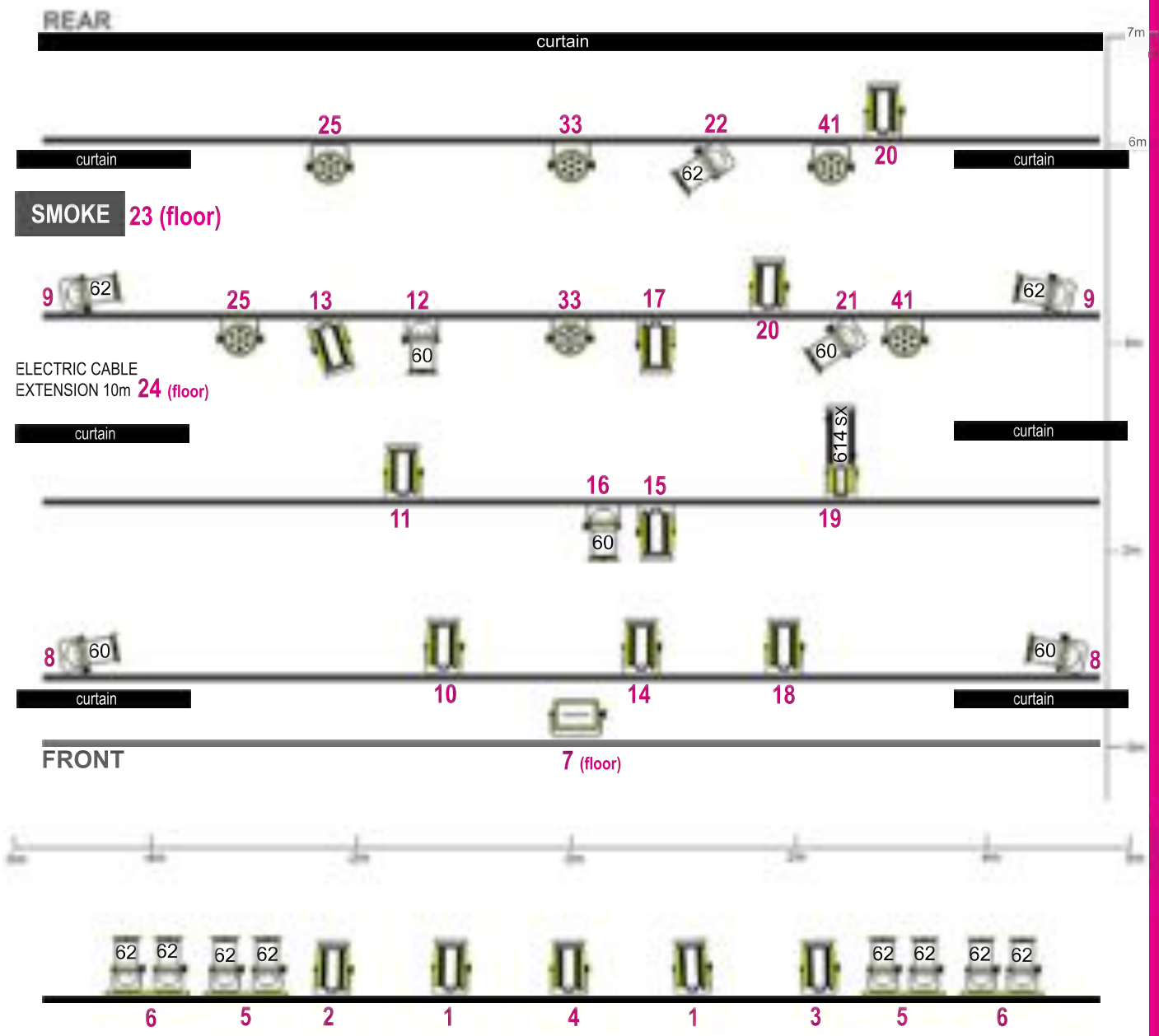
CHANNEL	EQUIPEMENT	QUANTITY	COLOR (LeeFilters)
1	PC 1kw	2	152
2	PC 1kw	1	152
3	PC 1kw	1	152
4	PC 1kw	1	-
5	PAR64 - cp62	4	119
6	PAR64 - cp62	4	135
7	Horizode 500/750w	1	136
8	PAR64 - cp60	2	136
9	PAR64 - cp62	2	136
10	PC 1kw	1	152
11	PC 1kw	1	156
12	PAR64 - cp60	1	-
13	PC 1kw	1	203
14	PC 1kw	1	152
15	PC 1kw	1	156
16	PAR64 - cp60	1	-
17	PC 1kw	1	203
18	PC 1kw	1	203
19	DEC 614ea	1	201
20	PC 1kw	2	152 / 202
21	PAR64 - cp60	1	202
22	PAR64 - cp62	1	136
23	FOG Machine	1	
24	Pislon 10m (extension cable)	1	
25/32	PAR LED	2	R-V-B-W-A-Dim-Strob
33/40	PAR LED	2	R-V-B-W-A-Dim-Strob
41/48	PAR LED	2	R-V-B-W-A-Dim-Strob

# WOK 'N' WOLL

DEURIUM MUSICALIA



## STAGE LIGHT PLAN

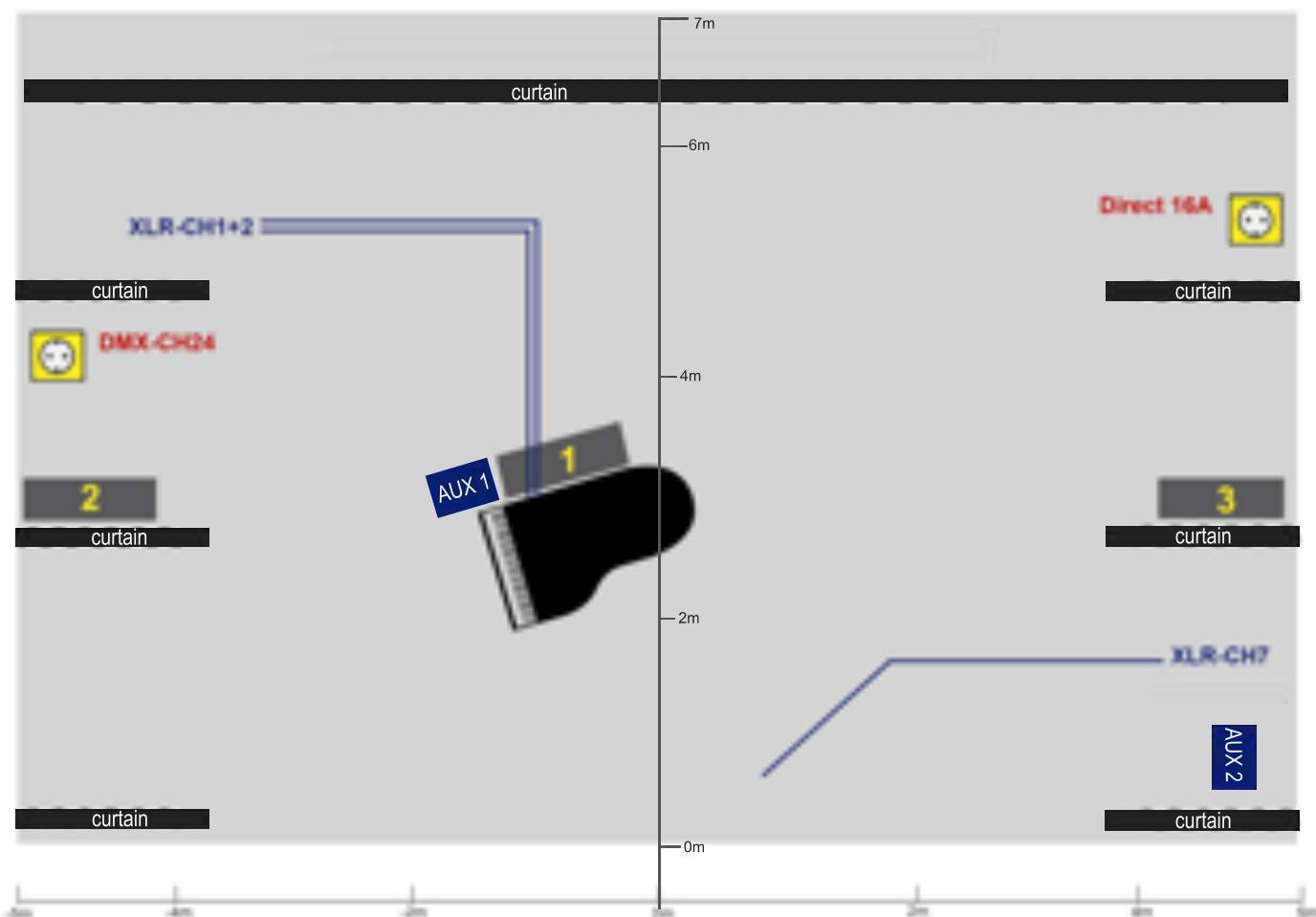


# WOK 'N' WOLL

déjûrîum musicaua



## STAGE PLOT



### ARRANGEMENT & STAGE PROPERTY NEEDED

- |  |   |
|--|---|
| 3x hallway betwin side curtains in each wing | 1x Black stage tape (50mm)              |
| 1x Passageway behind the curtain             | 1x White stage tape (50mm)              |
| 3x Electric Cable extention (10m)            | 1x Black PVC isolant tape (15/20mm)     |
| 3x Tables 100x50cm (1,2 & 3)                 | 1x Discreet lighting behind the curtain |
| 1x Opac black curtain 180x80cm               | 1x Discreet lighting in each wing       |
| 3x bottles of mineral water                  | 2x Microphone clamps (KM184)            |

*All backdrops and any decoration on stage must be fire resistant (French law : B-s2 ou M1 - Art L56) - Please contact us for advice.*